

# ROOMAN TECHNOLOGIES



## HARDWARE



### Assembling & Installation

- PC parts and Add on card identification
- Assembling a computer
- Partition a HDD and Format the same
- Installation of Desktop OS (DOS, Windows Vista/ Windows 7)
- Installation of Application (MS-Office, Acrobat Reader, Winzip)

### Processor

- Popular CPU chips
- Processor Components Voltage, Speed
- Internal and External Cache Memory

### RAM Types

- Types of Memory (ROM, RAM)
- RAM Types (EDO, DRAM, SRAM, VRAM, SDRAM, DDR RAM)
- SIMM, DIMM, SODIMM, MicroDIMM, RIMM
- Memory Chips and Form Factors

### Motherboards

- Introduction | AT Motherboard | ATX Motherboard
- Ports and Memory Slots on Motherboard
- Processor Sockets and Chipset
- Bus Architecture
- Compatibility Guidelines

### BIOS

- Understanding BIOS, CMOS, and Firmware.
- Configuring the System BIOS.
- Power-On Self-Test and Error Reporting.
- Plug and Play BIOS
- Power Management
- Disabling on-board Devices

### Installing IDE and SCSI Devices

- IDE Interfaces, EIDE, ATA/ATAPI, Serial ATA (SATA)

### Configuring IDE devices, Master/Slave/Cable Select

- SCSI Interface, SCSI ID, Jumper Block/DIP
- Switch setting

### Storage Devices

- Floppy and Hard Disk Drives.
- CD and DVD Optical Devices.
- USB and Flash Memory Drives

### I/O Interfaces

- Serial Port, Parallel Port, USB Port, IEEE 1394, IR Port
- Serial, Parallel, USB Cable and Connector
- Configuring Internal Devices-Multimedia, Modem, IR Device
- Configuring External Devices-Bluetooth Device, Digital Gadgets

C-9, New Krishna Park, Vikaspuri, New Delhi – 110018

Ph: 011-41582663, Mob. : 9891093219

E-mail: [info@rtechdelhi.com](mailto:info@rtechdelhi.com) Website: [www.rtechdelhi.com](http://www.rtechdelhi.com)

# ROOMAN TECHNOLOGIES

## Printers

- Print Technologies Solid Ink, Dot Matrix, Ink
- Dispersion, Laser
- Printer Interfaces – Serial, Parallel , USB, Network
- Printer Installation, Driver, Printer Settings
- Installing Cartridge, Toner
- Printer Problems Troubleshooting

## Anti-Virus Management

- Installation of renowned Anti-Virus in Server
- Client Mode
- Client Package creation and Remote Installation
- Downloading the update on server and distribution to clients

## Laptops and Portable Devices

- Fundamentals Features of Laptops and Portable Devices
- Configuring Power Management
- Application for Portable and Laptop Hardware
- Application for Portable and Laptop Hardware
- Safe Removal of Laptop-Specific Hardware
- Introduction to blackberry and handheld devices

## Data Recovery

- Tools to recover the lost Data
- Recover emails deleted in Outlook
- Image Creation and Data Synchronization

## Application Support

- Windows7 Built-in applications
- Internet Explorer and Outlook Express
- Remote Assistance

## PC Diagnostics and Maintenance

- The Power-ON Self Test and Boot
- Peripheral and Operating System Diagnostics
- Third Party Diagnostic and Performance
- Optimization
- Software PC Maintenance Tools

## Internet and Email

- Basics of Computer Networks
- Basics of Internet Architecture
- Services on Internet-Email, Search Engine, Online
- Booking Chat, Messaging and Conference sites
- Internet Access Techniques – Broadband, Dialup, Data Card

C-9, New Krishna Park, Vikaspuri, New Delhi – 110018

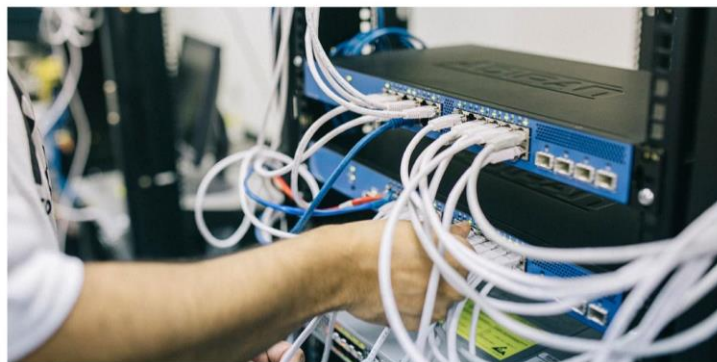
Ph: 011-41582663, Mob. : 9891093219

E-mail: [info@rtechdelhi.com](mailto:info@rtechdelhi.com) Website: [www.rtechdelhi.com](http://www.rtechdelhi.com)

# ROOMAN TECHNOLOGIES



## NETWORKING



### Basic Network Theory

- Network Definitions
- Network Models
- Connectivity
- Network Addressing
- Signaling Concepts

### Network Connectivity

- The Data Package
- Establishing a Connection
- Reliable Delivery
- Network Connectivity
- Noise Control
- Building Codes
- Connection Devices

### Advanced Network Theory

- The OSI Model
- Ethernet
- Network Resources

- Token Ring/IEEE 802.5

- FDDI

- Wireless Networking

### Common Network Protocols

- Families of Protocols

- NetBEUI

- Bridges and Switcher

- The TCP/IP Protocol

- Building a TCP/IP Network

- The TCP/IP Suite

### TCP/IP Services

- Dynamic Host Configuration

- DNS Name Resolution

- NetBIOS Support

- SNMP

- TCP/IP Utilities

- Upper Layer Services: FTP , HTTP, SMTP, POP3

C-9, New Krishna Park, Vikaspuri, New Delhi – 110018

Ph: 011-41582663, Mob. : 9891093219

E-mail: [info@rtechdelhi.com](mailto:info@rtechdelhi.com) Website: [www.rtechdelhi.com](http://www.rtechdelhi.com)

# ROOMAN TECHNOLOGIES

## **Network WAN Infrastructure**

The WAN Environment  
WAN Transmission Technologies  
WAN Connectivity Devices  
Voice Over Data Services

## **Remote Networking**

Remote Networking  
Remote Access Protocols  
VPN Technologies

## **Advanced Data Storage Techniques**

Enterprise Data Storage  
Clustering  
Network Attached Storage  
Storage Area Networks

## **Foundation of Security**

Essential Terminology  
Firewall, IDS ,IPS, VPN  
Virus, Trojan, Phishing  
Malware, Spyware, Adware  
Defining Security  
Need for security  
Cyber crime

## **Desktop Security**

Hardening of Operating System  
Updating the system and configuring the updates  
Deployment of OS Firewall  
Configuring Firewall Exceptions  
Internet Explorer Setting

## **Administering Windows Security**

Commonly used services and Ports  
How to find services and ports they listen on ?  
Kill Suspected Process and close ports?  
Overview of the windows registry?  
Tools for PC- Tuning and Optimization

## **Wireless Basics**

Introduction to Wireless Network  
Types of 802.11 Network  
Ad-Hoc and Infrastructure Network

## **Configuring WLAN and Security**

Setting up a Wireless Network  
Bridging the Wireless Network with Wired

## **Network**

Roaming within a WLAN  
Configuring WLAN Security

## **Broadband Setting and Configuration**

Features of various Broadband Routers  
Setting configured by renowned ISP  
Configuring NAT and Security  
Access your PC using Virtual Server and  
Dynamic DNS

## **Network Troubleshooting**

Using a Systematic Approach to  
Troubleshooting  
Network Support Tools: Utilities  
The Network Baseline

C-9, New Krishna Park, Vikaspuri, New Delhi – 110018

Ph: 011-41582663, Mob. : 9891093219

E-mail: [info@rtechdelhi.com](mailto:info@rtechdelhi.com) Website: [www.rtechdelhi.com](http://www.rtechdelhi.com)

# ROOMAN TECHNOLOGIES

## Windows 7/8/10. Configuring

- Installing, upgrading, and Migrating to Windows 7/8/10
- Capture a system image & Prepare for deployment
- Configuring Hardware And Application
- Configure IPv4 & IPv6 network Setting
- Configure Windows Firewall and Remote Management
- Configure User account Control (UAC)
- Configure Shared Resources , file and folder access
- Configure authentication and authorization
- Configure BitLocker, Direct Access and Remote connections
- Monitor System, Manage Disks
- Configure backup and system recovery option
- Configure updates to windows

C-9, New Krishna Park, Vikaspuri, New Delhi – 110018

Ph: 011-41582663, Mob. : 9891093219

E-mail: [info@rtechdelhi.com](mailto:info@rtechdelhi.com) Website: [www.rtechdelhi.com](http://www.rtechdelhi.com)

# ROOMAN TECHNOLOGIES



CCNA (200-301)

## 1.0 Network Fundamentals

- 1.1 Explain the role and function of network components
- Routers
  - L2 and L3 switches
  - Next-generation firewalls and IPS
  - Access points
  - Controllers (Cisco DNA Center and WLC)
  - Endpoints
  - Servers
- 1.2 Describe characteristics of network topology architectures
- 2 tier
  - 3 tier
  - Spine-leaf
  - WAN
  - Small office/home office (SOHO)
  - On-premises and cloud
- 1.3 Compare physical interface and cabling types
- Single-mode fiber, multimode fiber, copper
  - Connections (Ethernet shared media and point-to-point)
  - Concepts of PoE
- 1.4 Identify interface and cable issues (collisions, errors, mismatch duplex, and/or speed)
- 1.5 Compare TCP to UDP
- 1.6 Configure and verify IPv4 addressing and subnetting
- 1.7 Describe the need for private IPv4 addressing
- 1.8 Configure and verify IPv6 addressing and prefix
- 1.9 Compare IPv6 address types
- Global unicast
  - Unique local
  - Link local
  - Anycast
  - Multicast

C-9, New Krishna Park, Vikaspuri, New Delhi – 110018

Ph: 011-41582663, Mob. : 9891093219

E-mail: [info@rtechdelhi.com](mailto:info@rtechdelhi.com) Website: [www.rtechdelhi.com](http://www.rtechdelhi.com)

# ROOMAN TECHNOLOGIES

- Modified EUI 64
- 1.10 Verify IP parameters for Client OS (Windows, Mac OS, Linux)
- 1.11 Describe wireless principles
- Nonoverlapping Wi-Fi channels
  - SSID
  - RF
  - Encryption
- 1.12 Explain virtualization fundamentals (virtual machines)
- 1.13 Describe switching concepts
- MAC learning and aging
  - Frame switching
  - Frame flooding
  - MAC address table
- 2.0 Network Access**
- 2.1 Configure and verify VLANs (normal range) spanning multiple switches
- Access ports (data and voice)
  - Default VLAN
  - Connectivity
- 2.2 Configure and verify interswitch connectivity
- Trunk ports
  - 802.1Q
  - Native VLAN
- 2.3 Configure and verify Layer 2 discovery protocols (Cisco Discovery Protocol and LLDP)
- 2.4 Configure and verify (Layer 2/Layer 3) EtherChannel (LACP)
- 2.5 Describe the need for and basic operations of Rapid PVST+ Spanning Tree Protocol and identify basic operations
- Root port, root bridge (primary/secondary), and other port names
  - Port states (forwarding/blocking)
  - PortFast benefits
- 2.6 Compare Cisco Wireless Architectures and AP modes
- 2.7 Describe physical infrastructure connections of WLAN components (AP, WLC, access/trunk ports, and LAG)
- 2.8 Describe AP and WLC management access connections (Telnet, SSH, HTTP, HTTPS,

C-9, New Krishna Park, VIKASPURI, New Delhi – 110018

Ph: 011-41582663, Mob. : 9891093219

E-mail: [info@rtechdelhi.com](mailto:info@rtechdelhi.com) Website: [www.rtechdelhi.com](http://www.rtechdelhi.com)



# ROOMAN TECHNOLOGIES

console, and TACACS+/RADIUS)

- 2.9 Configure the components of a wireless LAN access for client connectivity using GUI only such as WLAN creation, security settings, QoS profiles, and advanced WLAN settings

## 3.0 IP Connectivity

- 3.1 Interpret the components of routing table

- Routing protocol code
- Prefix
- Network mask
- Next hop
- Administrative distance
- Metric
- Gateway of last resort

- 3.2 Determine how a router makes a forwarding decision by default

- Longest match
- Administrative distance
- Routing protocol metric

- 3.3 Configure and verify IPv4 and IPv6 static routing

- Default route
- Network route
- Host route
- Floating static

- 3.4 Configure and verify single area OSPFv2

- Neighbor adjacencies
- Point-to-point
- Broadcast (DR/BDR selection)
- Router ID

- 3.5 Describe the purpose of first hop redundancy protocol

## 4.0 IP Services

- 4.1 Configure and verify inside source NAT using static and pools

- 4.2 Configure and verify NTP operating in a client and server mode

- 4.3 Explain the role of DHCP and DNS within the network

- 4.4 Explain the function of SNMP in network operations

- 4.5 Describe the use of syslog features including facilities and levels

- 4.6 Configure and verify DHCP client and relay

- 4.7 Explain the forwarding per-hop behavior (PHB) for QoS such as classification, marking, queuing, congestion, policing, shaping

- 4.8 Configure network devices for remote access using SSH

C-9, New Krishna Park, Viaspuri, New Delhi – 110018

Ph: 011-41582663, Mob. : 9891093219

E-mail: [info@rtechdelhi.com](mailto:info@rtechdelhi.com) Website: [www.rtechdelhi.com](http://www.rtechdelhi.com)



# ROOMAN TECHNOLOGIES

4.9 Describe the capabilities and function of TFTP/FTP in the network

## 5.0 Security Fundamentals

- 5.1 Define key security concepts (threats, vulnerabilities, exploits, and mitigation techniques)
- 5.2 Describe security program elements (user awareness, training, and physical access control)
- 5.3 Configure device access control using local passwords
- 5.4 Describe security password policies elements, such as management, complexity, and password alternatives (multifactor authentication, certificates, and biometrics)
- 5.5 Describe remote access and site-to-site VPNs
- 5.6 Configure and verify access control lists
- 5.7 Configure Layer 2 security features (DHCP snooping, dynamic ARP inspection, and port security)
- 5.8 Differentiate authentication, authorization, and accounting concepts
- 5.9 Describe wireless security protocols (WPA, WPA2, and WPA3)
- 5.10 Configure WLAN using WPA2 PSK using the GUI

## 6.0 Automation and Programmability

- 6.1 Explain how automation impacts network management
- 6.2 Compare traditional networks with controller-based networking
- 6.3 Describe controller-based and software defined architectures (overlay, underlay, and fabric)
  - Separation of control plane and data plane
  - North-bound and south-bound APIs
- 6.4 Compare traditional campus device management with Cisco DNA Center enabled device management
- 6.5 Describe characteristics of REST-based APIs (CRUD, HTTP verbs, and data encoding)
- 6.6 Recognize the capabilities of configuration management mechanisms Puppet, Chef, and Ansible
- 6.7 Interpret JSON encoded data

C-9, New Krishna Park, Vikaspuri, New Delhi – 110018

Ph: 011-41582663, Mob. : 9891093219

E-mail: [info@rtechdelhi.com](mailto:info@rtechdelhi.com) Website: [www.rtechdelhi.com](http://www.rtechdelhi.com)

# ROOMAN TECHNOLOGIES

## Red Hat Enterprise Linux

### Red Hat System Administration I

Accessing the Command Line  
Managing Files From the Command Line  
Getting Help in Red Hat Enterprise Linux  
Creating, Viewing, and Editing Text Files  
Managing Local Linux Users and Groups  
Controlling Access to Files with Linux File System Permissions  
Monitoring and Managing Linux Process  
Controlling Services and Daemons  
Configuring and Security openSSH Service  
Analyzing and storing Logs  
Managing red Hat Enterprise Linux Networking  
Archiving and Copying Files Between Systems  
Installing and Updating Software Packages  
Accessing Linux File System  
Analyzing servers and getting support  
Comprehensive review

### Red Hat System Administration II

Automating Installation with Kickstart  
Using Regular Expressions with grep  
Creating and Editing Text Files with Vim  
Scheduling Future Linux Tasks  
Managing Priority of Linux Process  
Controlling Access to files with Access Control Lists (ACLs)  
Managing Selinux Security  
Connecting to network-defined User and Groups  
Adding Disks, Partitions and File systems to a Linux System  
Managing Logical Volume management (LVM) Storage  
Accessing Network Storage with Network File System (NFS)  
Accessing Network Storage with SMB  
Controlling and Troubleshooting the Red Hat Enterprise Linux Boot Process  
Limiting Network Cication with Firewalid  
Comprehensive Review of System Administration II

C-9, New Krishna Park, Vikaspuri, New Delhi – 110018

Ph: 011-41582663, Mob. : 9891093219

E-mail: [info@rtechdelhi.com](mailto:info@rtechdelhi.com) Website: [www.rtechdelhi.com](http://www.rtechdelhi.com)

# ROOMAN TECHNOLOGIES



## Introduction

- History
- Features
- Setting up path
- Working with Python
- Basic Syntax
- Variable and Data Types
- Operator

## Conditional Statements

- If
- If- else
- Nested if-else

## Looping

- For
- While
- Nested loops

## Control Statements

- Break
- Continue
- Pass

## String Manipulation

- Accessing Strings
- Basic Operations
- String slices
- Function and Methods

## Lists

- Introduction
- Accessing list

C-9, New Krishna Park, Vikaspuri, New Delhi – 110018

Ph: 011-41582663, Mob. : 9891093219

E-mail: [info@rtechdelhi.com](mailto:info@rtechdelhi.com) Website: [www.rtechdelhi.com](http://www.rtechdelhi.com)

# ROOMAN TECHNOLOGIES

- Operations
- Working with lists
- Function and Methods

## Tuple

- Introduction
- Accessing tuples
- Operations
- Working
- Functions and Methods

## Dictionaries

- Introduction
- Accessing values in dictionaries
- Working with dictionaries
- Properties
- Functions

## Functions

- Defining a function
- Calling a function
- Types of functions
- Function Arguments
- Anonymous functions
- Global and local variables

## Modules

- Importing module
- Math module
- Random module
- Packages
- Composition

## Input-Output

- Printing on screen
- Reading data from keyboard
- Opening and closing file
- Reading and writing files
- Functions

## Exception Handling

- Exception
- Exception Handling

C-9, New Krishna Park, Vikaspuri, New Delhi – 110018

Ph: 011-41582663, Mob. : 9891093219

E-mail: [info@rtechdelhi.com](mailto:info@rtechdelhi.com) Website: [www.rtechdelhi.com](http://www.rtechdelhi.com)

# ROOMAN TECHNOLOGIES

- Except clause
- Try ? finally clause
- User Defined Exceptions



## ETHICAL HACKING



- Introduction to Ethical Hacking
- Footprinting and Reconnaissance
- Scanning Networks
- Enumeration
- Vulnerability Analysis
- System Hacking
- Malware Threats
- Sniffing
- Social Engineering
- Denial-of-Service
- Session Hijacking
- Evading IDS, Firewall, and Honeypots
- Hacking Web Servers
- Hacking Web Applications
- SQL Injection
- Hacking Wireless Networks
- Hacking Mobile Platforms
- IoT Hacking
- Cloud Computing
- Cryptography

C-9, New Krishna Park, Vikaspuri, New Delhi – 110018

Ph: 011-41582663, Mob. : 9891093219

E-mail: [info@rtechdelhi.com](mailto:info@rtechdelhi.com) Website: [www.rtechdelhi.com](http://www.rtechdelhi.com)